



\$ 2,999

Pneumatic

**LINE BORING MACHINE
LBM.13 / LBP.13**

- 1HP 1Phase 110V
- 13 Spindles (6 left and 7 Right)
- Stainless Steel Spindle
- Adjustable Fence with
- 2 Flip Stops
- Expandable Fence Guide
- Max stock height 2-1/2"
- Distance between Spindle center 32mm
- Back Fence and Cross fence scale indicator
- Indexing Pin for continuous drilling
- 1 Free set of 5mm bits included
- Operation: Manual or Pneumatic



WATCH VIDEO

\$ 2,499

Manual

FH.16.C
Mortiser 16mm
3HP 1PH
220V



\$ 1,040

MA.1000
Workbench



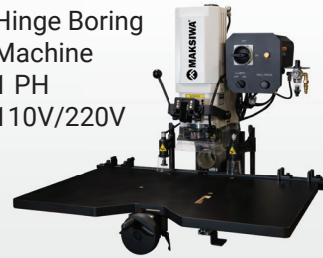
\$ 899

TC.3000
Panel
Carrier



\$ 699

HBM.1000
Hinge Boring
Machine
1 PH
110V/220V



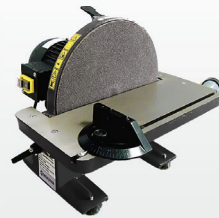
\$ 3,499

LDF
Belt and Disc Sander
1 PH
110V



\$ 899

LD.300
Disc Sander
1PH
110V



\$ 399

SF.35.MI
Band Saw
14"
1.75 HP
1PH 110V



\$ 2,399

PRA/9
Roller Stand
9 Rollers



\$ 499

For more information, visit www.maksiwa.com or @ /maksiwausa

1-800-244-1455
orders@macmurraypacific.com
Freight PPD \$ 2000



**MacMURRAY
PACIFIC**
macpac1.com

568 7TH ST
SAN FRANCISCO CA 94103



macpac1.com

**SLIDING PANEL SAW
BMS.3200.IR - Dado Edition**

5 HP Motor - 1 Phase 220V or 3 Phase 220V
Clear up to 10' long sheets



\$ 8,999



WATCH VIDEO

- **NEW** Dado Blade Stack Compatible
- **NEW** Design, more Ergonomic, Improved Construction and Materials
- **NEW** Dual Blade Covers (straight and bevel cuts)
- **NEW** 1 HP Scoring Motor
- Swing-Away Arm with Integrated Dust Collection
- Sheet Clamps, Wood Stopper and Slider handle

- **NEW** Soft touch Buttons and Control Panel
- **NEW** Adjustable Leveling Feet
- Digital Angle Display 90° to 45°
- Rip Fence with Micro Adjustment
- Set of Blades Included (Main 12" + Scoring 4 3/4")
- Sliding Table Mechanism - Roller Bearing

**TITANIUM
BMT.3200.IR**



\$ 10,999



WATCH VIDEO

- Cuts up to 10' long sheets
- 5HP Main Motor - 1Phase 220V
- 3/4HP Scoring Motor
- Digital Angle Display 90° to 45°
- Digital Rip Fence Readout with Micro Adjustment
- Max Rip Capacity 51"
- Set of Blades Included
- Overhead Guard with swing away
- 2 Flip Stops, Wedge Clamp and Sheet Clamp
- 2 Extended Crosscut Fence Bars
- Sliding Table Dimensions 126"
- Dual Blade Cover Protector
- Sliding Table Mechanism - Ball Bearings

**PLATINUM
BMP.3200.IR**



\$ 12,499



WATCH VIDEO

- Cuts up to 10' long sheets
- 7.5 HP Motor - 3 Phase 220V
- 3/4HP Scoring Motor
- Digital Angle Display 90° to 45°
- Digital Rip Fence Readout with Micro Adjustment
- Max Rip Capacity 51"
- Eye Level Control Panel and Set of Blades Included
- Overhead Guard with Swing Away
- 2 Flip Stops, Wedge Clamp and Sheet Clamp
- 2 Extended Crosscut Fence Bars
- Sliding Table Dimensions 126"
- Dual Blade Cover Protector
- Sliding Table Mechanism - Ball Bearings



**BMS.1600.IR
Dado Edition**



\$ 6,399



WATCH VIDEO

- 5 HP Motor - 1 Phase 220V
- Cuts up to 5' long sheets
- Digital Rip Fence Readout
- **NEW** Dado Blade Stack Compatible
- **NEW** Dual Blade Covers (straight and bevel cuts)
- **NEW** 1 HP Scoring Motor
- Swing-Away Arm with Integrated Dust Collection
- Sheet Clamps, Wood Stopper and Slider handle
- **NEW** Soft touch Buttons and Control Panel
- Digital Angle Display 90° to 45°
- Set of Blades Included (Main 12" + Scoring 4 3/4")
- Sliding Table Mechanism - Roller Bearing

**DIAMOND
BMD.3200.IR**



\$ 20,999



WATCH VIDEO

- CNC Rip Fence
- 10 HP Motor 3 Phase 220V and 1 HP Scoring Motor
- Motorized Blade Rise, Fall and Tilt
- Touch Screen Control Panel
- Main Blade Speed 3,000/4,000/5,000 RPM
- Digital Angle Display 90° to 45°
- Max Rip Capacity 51"
- Set of Blades Included
- Overhead Guard with Swing Away
- 2 Flip Stops, Wedge Clamp and Sheet Clamp
- Cuts up to 10' long sheets
- Dual Blade Cover Protector
- Sliding Table Mechanism - Ball Bearings

*Price subject to change without notice.



GLUE RECOMMENDATION

CBC.E / CBC.MR / CBC.2MR / CBC.FLEX

Proper glue should have an average temperature between 130° to 180° Celsius and be pellet glue.

We recommend the following glues:

- Jowat White color (ref. 282.21)
- Jowat Natural color (ref. 282.20)
- Kleiberit Ivory color (ref. 788.3/20)
- Kleiberit White color (ref.788.3/10)

Any brand of pellet glue with temperature between 130° to 180° Celsius

CBC.T / CBC.TPM

Proper glue should have an average temperature between 180° to 210° Celsius and be pellet glue.

We recommend the following glues:

- Jowat (ref. 280.30) 180°-200°C
- Kleiberit (ref. 779.6) 200°-210°C

Any brand of pellet glue with temperature between 180° to 210° Celsius

CBC.PCR

For EVA Glue - Use any granulated glue within the Temperature range of 180° - 210°C

For PUR Glue - Use any granulated glue within the Temperature range of 110° - 150°C.

- EVA - Jowat (ref. 280.30) Process Temp 180° - 200° C
- PUR - Jowat (ref 608.00/608.01) Process Temp 110° - 130°C
- EVA - Kleiberit (ref. 773.3) Process Temp 180° - 200°C

AUTOMATIC EDGE BANDER CBC.T



WATCH VIDEO

\$ 13,200

FREE
INSTALLATION
VIDEO

- 1 Phase 220V
- Tape Thickness 0.4 mm to 3 mm
- Panel Thickness 12 mm / 45 mm
- Automatic Panel Feed System
- Feeding Speed 16ft/min
- Dual Pressure Rollers
- Pre-Heated Infeed Fence
- Glue Pot Capacity 2 lbs
- Individually adjustable Top and Bottom Flush Trimming
- Extendable Panel Support Rail
- Digital Temperature Control
- Front and End Trim
- Buffing Unit
- Melamine/PVC/ABS/PP/Veneer/Solid Wood Strip/Laminate

AUTOMATIC EDGE BANDER CBC.TPM - Pre-Milling



WATCH VIDEO

\$ 21,900

FREE
INSTALLATION
VIDEO



- 1 Phase 220V
- Panel Thickness 10 mm / 40 mm
- Edgebanding Thickness 0.4 - 2mm
- High Frequency Motors
- Automatic Panel Feed System 21ft/min
- Pre-milling station 1" | 30mm
- Vertical Rounding / End Trimming
- Flat / Radius Trimming
- Glue Scraper Unit
- Buffing Unit
- Industrial PLC and Touchscreen Control
- Centralized Pressure Beam
- Pressure rollers 2x and Industrial drag chain
- Centralized Dust Collection
- Teflon Coated Glue pot 1lb | 0.5kgs
- Melamine/PVC/ABS/PP/Veneer

PLATINUM AUTOMATIC EDGE BANDER CBC.PCR - Corner Rounding



\$ 34,900



- PLC controlled by 5.6" TFT touch screen
- Edge Tape: 0.4-3mm
- Panel Thickness: 8-50mm
- 12HP 1 Phase 220V 60Hz
- Corner Rounding
- Glue Scraper Unit
- Buffing Unit 1400 RPM
- Top and Bottom Trimming 2 HF Motors 12.000 RPM
- Pre-milling Unit 2 HF Motors 9.000 RPM
- C.A.S.S - Cleaning Agent Spraying System
- XMELT Glue Pot System (EVA or PUR Adhesives + easy drainage System)

- Stand-by mode: Only one click to restart production.
- Glue Pot Capacity 1.5kg | 3.3lbs Teflon Coated
- Centralized Dust Collector with automatic ON/OFF
- 12 mm Thickness Solid Oxycut monoblock structure and industrial drag chain to handle large workloads
- Adjustable Spring Loaded Pressure Unit with (2) Pressure Rollers
- Reinforced Pressure Beam with (2) Prismatic guides
- Conveyor Chain Feed System for optimum results
- Feed speed of 18ft/min
- Net Weight 1653 lbs | 750 kgs
- Compact Design 3026 x 1036 x 1230 mm / 119" x 40-13/16" x 48-7/16"
- Melamine/PVC/ABS/PP/Veneer

EDGE BANDER SOLUTIONS

CBC.E + RBB.1000 + MA.1000



\$ 1,399

\$ 899

\$ 2,999

\$ 5,297



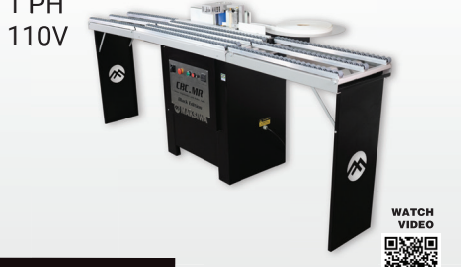
WATCH VIDEO

CBC.E

- 1 Phase 110V
- Uses Low Temperature Granulated Pellet Glue
- Tape Thickness 0.3 mm to 2 mm
- Max Edge Tape Height 3"
- Manual Feeding speed 18 ft/min
- Digital Temperature Control
- Portable and Affordable
- Melamine/ PVC/ ABS/ PP/ Veneer non-fleeced

CBC.MR Edgebander

1 PH
110V



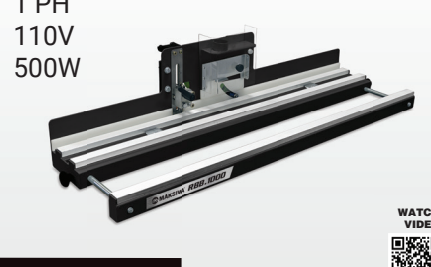
\$ 4,299



WATCH VIDEO

RBB.1000 Edge Trimmer

1 PH
110V
500W



\$ 1,399



WATCH VIDEO

RBB.4G Edge Trimmer

1 PH
220V
2100W



\$ 2,999



WATCH VIDEO

CP/1.C Dust Collector

1 HP
1PH 110V



\$ 399



WATCH VIDEO

CP/2.C Dust Collector

2 HP
1 PH 220V



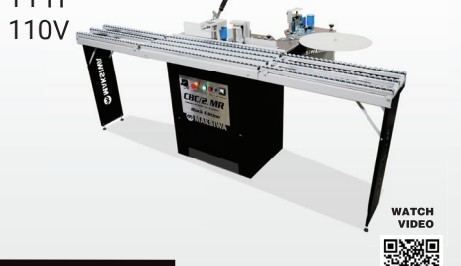
\$ 699



WATCH VIDEO

CBC/2.MR Edgebander

1 PH
110V



\$ 5,399



WATCH VIDEO

CBC.E Edgebander

1 PH
110V



\$ 2,999



WATCH VIDEO

CPD/3.C Dust Collector

3 HP
1 PH
220V



\$ 999



WATCH VIDEO

CY/3 Cyclone Dust Collector

3 HP
1 PH
220V



\$ 2,499



WATCH VIDEO

CPD/5.S Dust Collector

5 HP
3 PH
220V



\$ 3,999



WATCH VIDEO